

Podcast⁺ | Podcast Production Studio 播客直播数字调音台

播⁺



100% recycled paper
100% papier recyclé



www.relacart.com

使用说明书
Installation and Operation

Contents

Introduction	2
Product Introduction	2
Packing List	3
Product panel introduction	4
Front panel	4
Rear panel	6
Quick Start Guide	8
1 Connect your microphone	8
2 Connect your musical instrument	9
3 Connecting your line in device	10
4 Connect to your active speaker	11
5 Connecting your monitor device	12
6 Connect your smartphone or computer through a data cable	13
7 Connecting your PC with a cable	14
Restore factory setting	15
Specification	15
Precautions	16

目录

引言	19
产品简介	19
包装清单	20
产品面板介绍	21
前面板	21
后面板	23
快速入门指南	25
1 连接您的麦克风	25
2 连接您的乐器	26
3 连接您的线路输入设备	27
4 连接您的有源音箱	28
5 连接您的监听设备	29
6 通过数据线连接您的智能手机或电脑	30
7 通过数据线连接您的电脑	31
恢复出厂设置	32
技术指标	32
注意事项	33

Introduction

Thank you for choosing RELACART Podcast⁺ production studio audio interface, and welcome you to join our team of tens of thousands of professional users. Our professional design and production experience ensure the excellent performance of our products in terms of quality, performance and stability.

Product Introduction

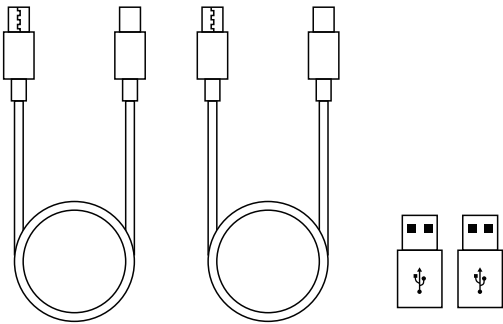
Podcast⁺ is a podcast production studio specially designed for live streaming app, which collects the live application functions such as mixing, sound effects, and effects. Can connect 2 mobile phones or PC at the same time to transmit to live broadcast equipment through digital audio. Its design is light and easy to carry, the panel layout is simple, and the function distinction is clear and easy to understand. This device is powered by a USB-C interface 5V/1A and supports power from a suitable mobile phone charger or power bank. Podcast⁺ is suitable for live broadcast, recording, Karaoke and other functions of mobile phones, tablets and PC, etc.

Functions include:

- 4 sliding faders, respectively adjust MIC 1, MIC 2, INSTRUMENT, MONITOR volume, and equipped with 4 mute buttons.
- 8 volume knobs, respectively adjust MIC1 GAIN, MIC2 GAIN, LIVE INPUT, LIVE OUTPUT, INSTRUMENT GAIN, LINE IN, EFFECT volume and REVERB volume.
- 9 large custom sound effects buttons, can change sound effects via USB.
- +48V phantom power switch, which can provide power to the microphone port for live streaming condenser microphones.
- Internal play switch, when turned on, the 2 USB-C input audio does not return to the USB-C port, eliminating the echo problem.
- Noise reduction switch, when turned on, reduces the ambient noise picked up by the microphone.
- MIC.PRIOR switch, when there is audio input after the microphone is turned on, it will attenuate the audio of the accompaniment, instrument, and sound effect.
- REVERB switch, up to 16 kinds of preset reverb effects, suitable for a variety of scene applications.

Packing List

Podcast⁺ Mixer
 USB-C to USB-A adapter *2
 Dual USB-C data cable *2
 Manual



Product panel introduction

Podcast⁺ Front panel



- 1 REVERB button: There are 16 kinds of simulated live reverb effects preset internally, and one of the 16 kinds of internal preset effects can be selected for use. Press the [REVERB] button, the LED indicator will light up green to indicate that the reverb function is on; and use the [◀] / [▶] button to select the desired effect. Then press [REVERB], the LED indicator goes off, which means the reverb function is turned off.
- 2 ◀/▶ Control buttons: Forward or backward switching analog reverb effect function.

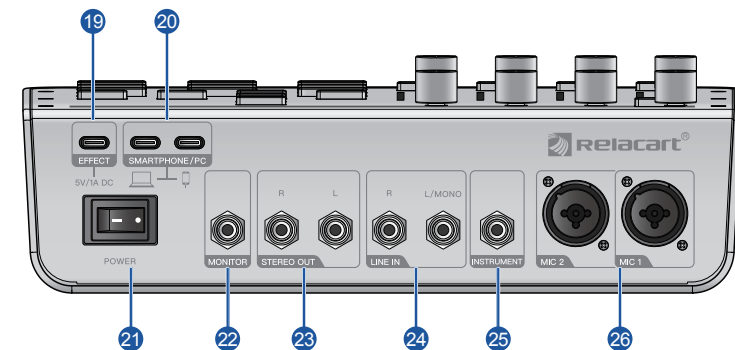
- ③ MIC1/2 GAIN microphone gain knob: Determine the basic volume of MIC 1 and MIC 2 respectively. Adjust these knobs to increase or decrease the volume of the current channel, with a maximum gain of 45dB.
- ④ INSTRUMENT GAIN Instrument gain knob: Adjusts the basic volume of the sound source from a guitar or other high-impedance input instrument. The maximum gain is 45dB.
- ⑤ EFFECT knob: Adjust the volume of custom sound effects.
- ⑥ LIVE INPUT knob: Adjust the volume of the audio source input from the USB interface.
- ⑦ LIVE OUTPUT knob: Adjust the recording volume output from the device to the USB interface.
- ⑧ LINE IN knob: Adjust the output volume of the sound input from the audio device or other sound sources connected to the channel.
- ⑨ REVERB knob: Adjust the volume of the reverb effect.
- ⑩ Fader: Adjust the audio output level of MIC 1, MIC 2, instrument or monitor.
- ⑪ Main level meters: These peak level meters are composed of 10 LEDs, with three colors representing signal levels in different ranges and a traffic light style. Their range ranges from -40dB (Green) at the bottom, to 0dB in the middle, and then to PEAK (Red) at the top.
- ⑫ Mute button: Turn on (LED lights red) or turn off (LED off) the mute function. Use this button to mute MIC 1, MIC 2, instruments, or monitors when you want to take a break or when you encounter a special situation while livestreaming.
- ⑬ +48V button: Can turn on the phantom power supply on MIC 1 and MIC 2 (Highlighted in red). When this button is turned on, DC+48V phantom power will be supplied to the XLR plug on the MIC input socket. When using a condenser microphone that requires phantom power supply, please turn on this switch button.
- ⑭ INTERNAL PLAY button: Prevent echo phenomenon when using live broadcast.
- ⑮ NOISE REDUCTION button: Effectively reduce complex environmental noise.
- ⑯ MIC PRIOR button: Audio for accompaniment, instruments, C-style performances, and voice input is attenuated during voice input. When there is no audio input from the microphone, it returns to the original volume.

- ⑰ EFFECT custom sound effect buttons: 9 kinds of custom sound effect buttons. These buttons can play customized audio files. You can connect to the computer through EFFECT's USB-C interface and replace the customized sound effects in the form of a USB flash drive.

Note: Replace the produced effect file with the factory effect file (the name of the file needs to be changed to: 00001 — 00009), otherwise the effect file will not be recognized; the total memory of the sound effect file is 32M, and supports MP3 and WAV audio formats.

- ⑱ Main headphone [] output jack: Used to connect your headphone jack.

Podcast⁺ Rear Panel



- ⑱ EFFECT/5V DC port: Used to replace your customized exclusive live sound effects and commercially available USB power adapter or USB mobile power supply.

Notice

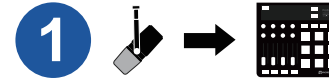
- Before using this product, please be sure to read the safety precautions for the USB power adapter or USB mobile power supply you are using.
- Please use a USB mobile power supply or USB power adapter with an output voltage of 4.8 V to 5.2 V and an output current of at least 1A or higher.

Quick Start Guide

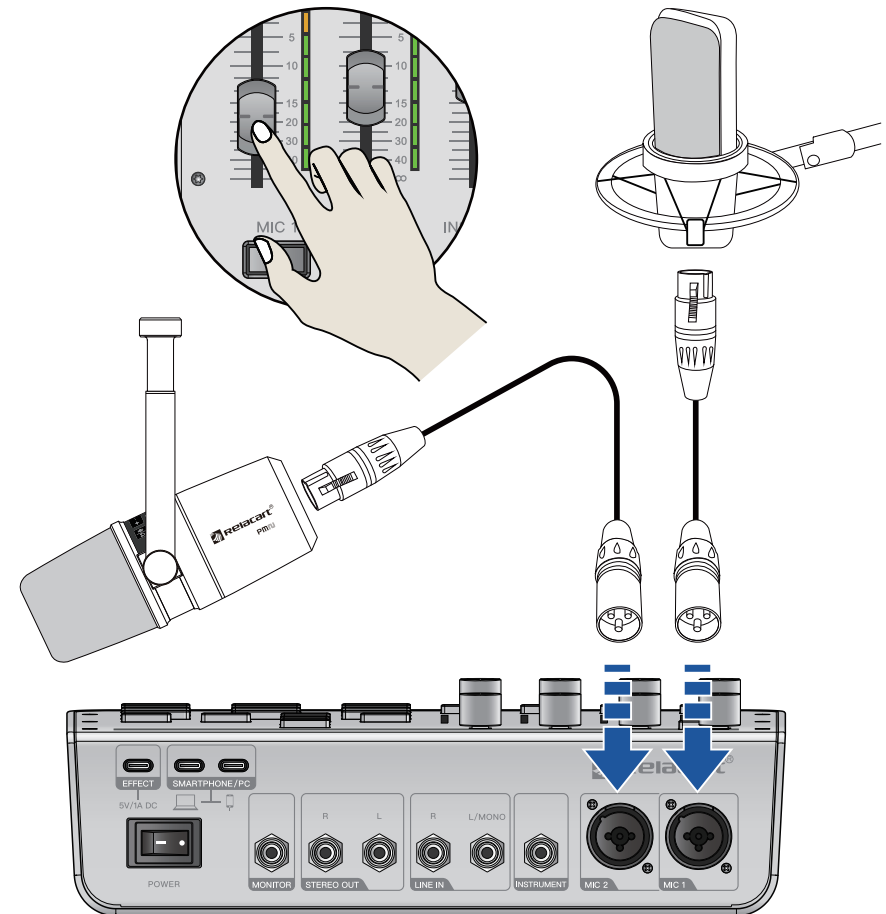
- 20 USB 2.0 jack: Connect your computer or smartphone/tablet here.

Notice

- Make sure to use the USB cable packaged with this product.
 - Do not connect any other devices except for an smartphone, tablet or a computer to the USB 2.0 port.
 - Before plugging or unplugging the USB cable, exit all applications to ensure that the product is not transferring any data.
 - After you unplug the cable, make sure to wait for at least six seconds before plugging the cable in again. Rapidly plugging in and unplugging the cable may cause a malfunction.
- 21 Power toggle switch: used to turn on (I) or turn off (O) the power of the device.
- 22 MONITOR output jack: used to connect headphones, this jack supports stereo phone type plugs.
- 23 STEREO output jack: Supports a phone type plug for connecting to active speaker or recorders, and outputting mixed sound in stereo.

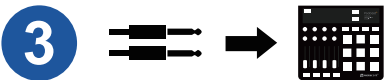
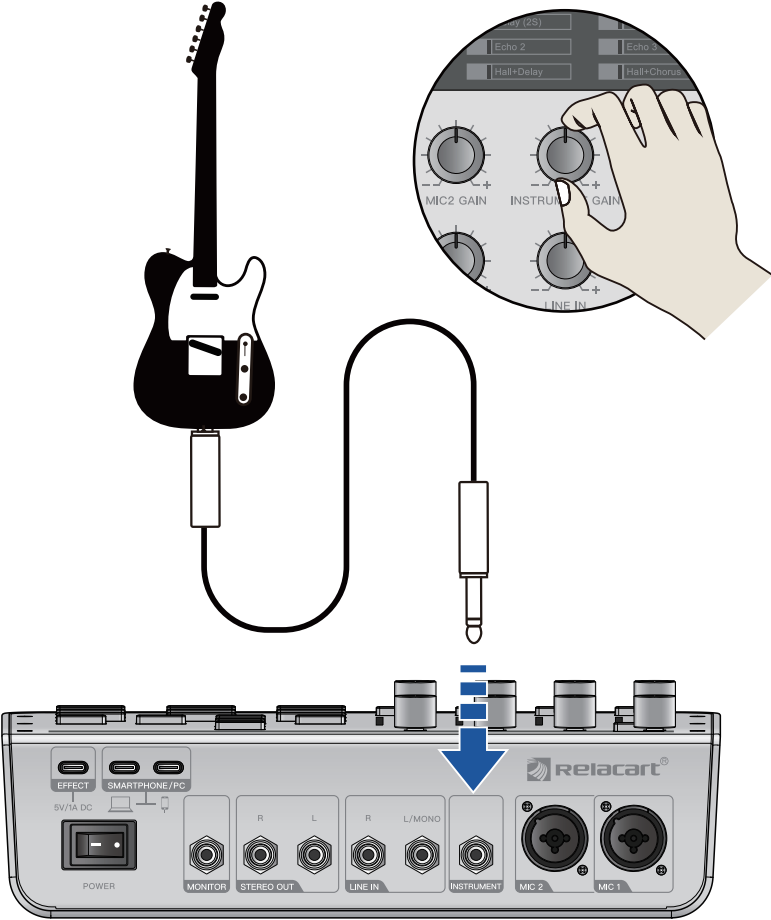


Connecting your microphone

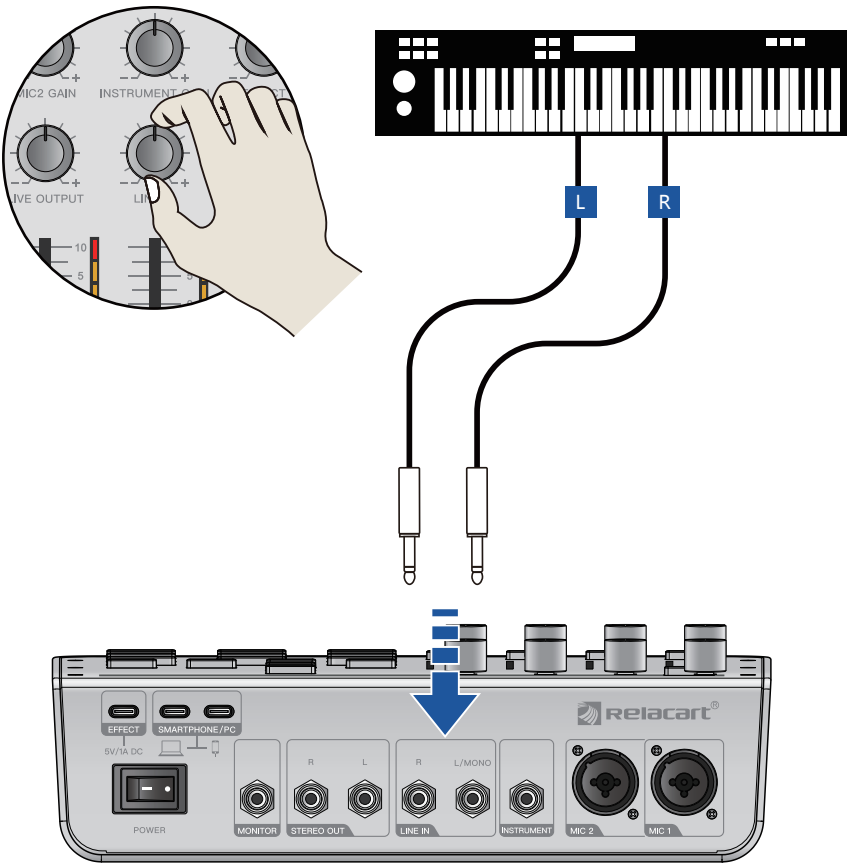


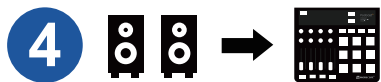


Connecting your musical instrument

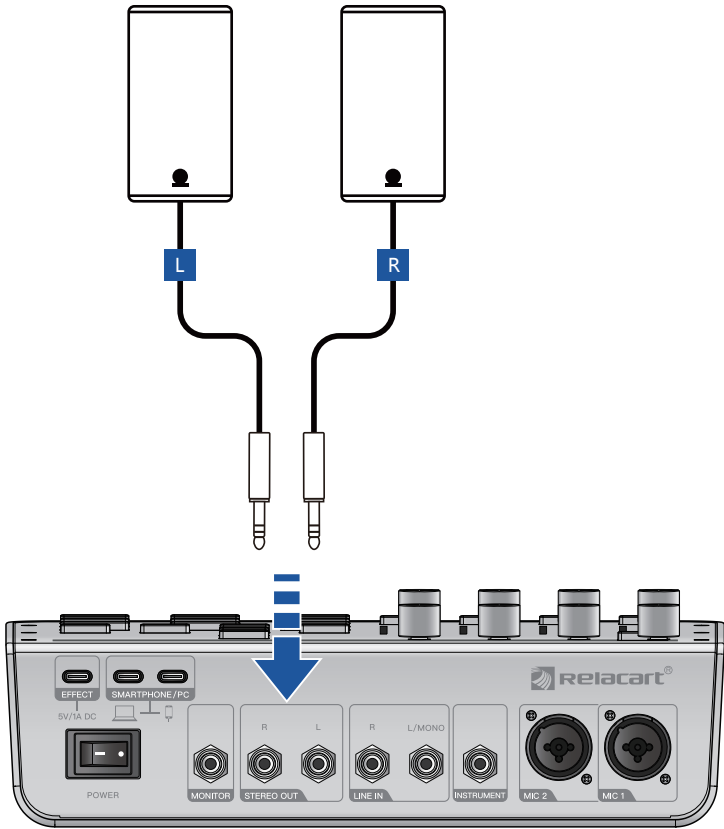


Connecting your line in device

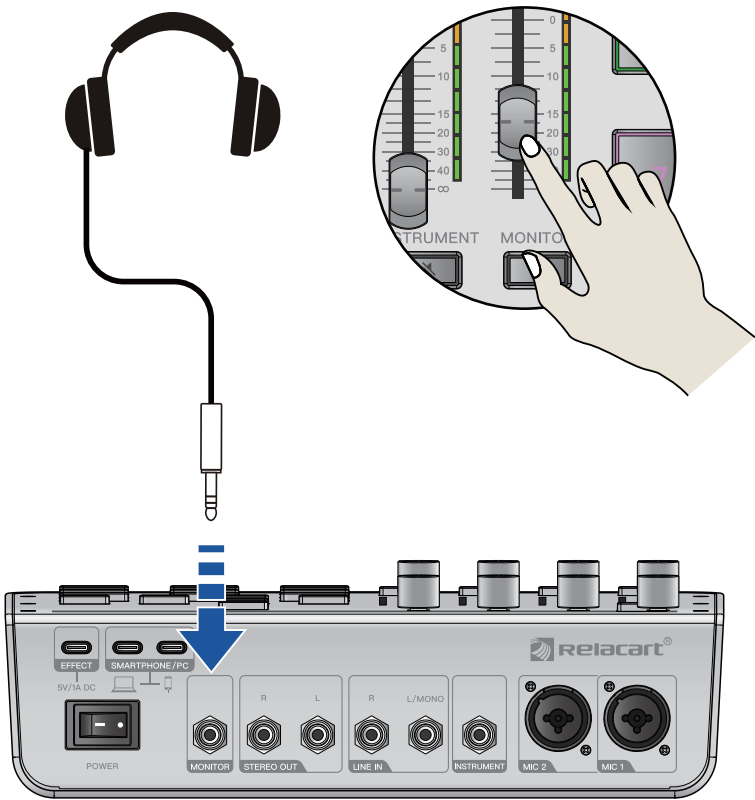




Connect to your active speaker

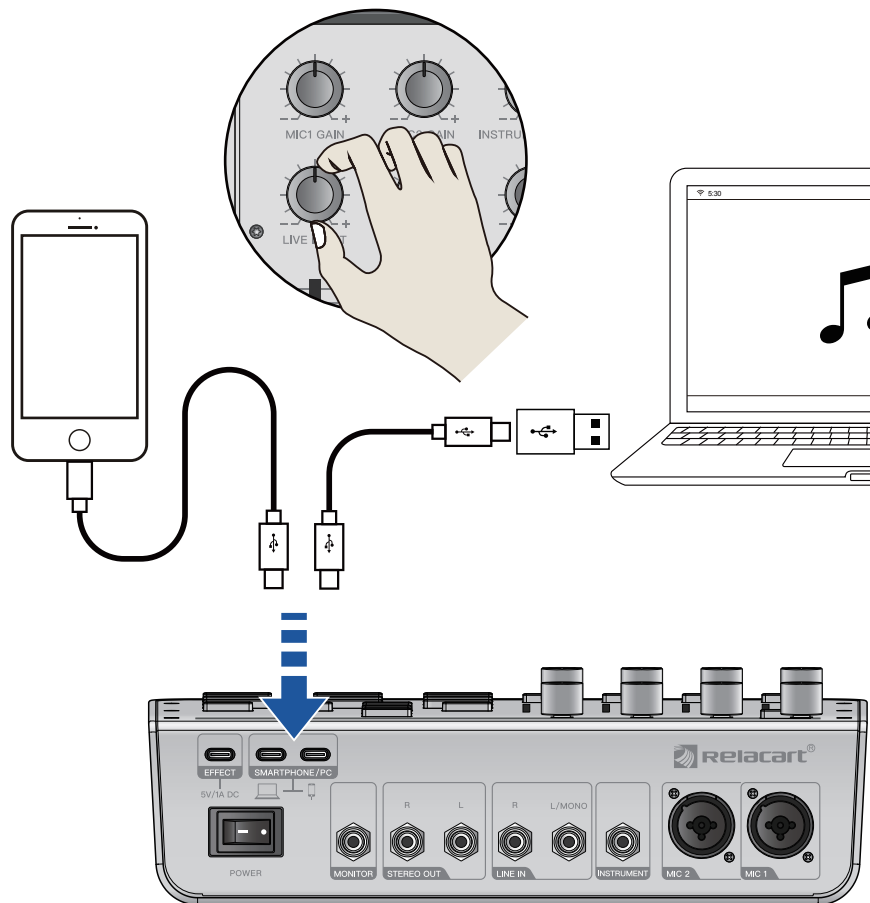


Connecting your monitor device

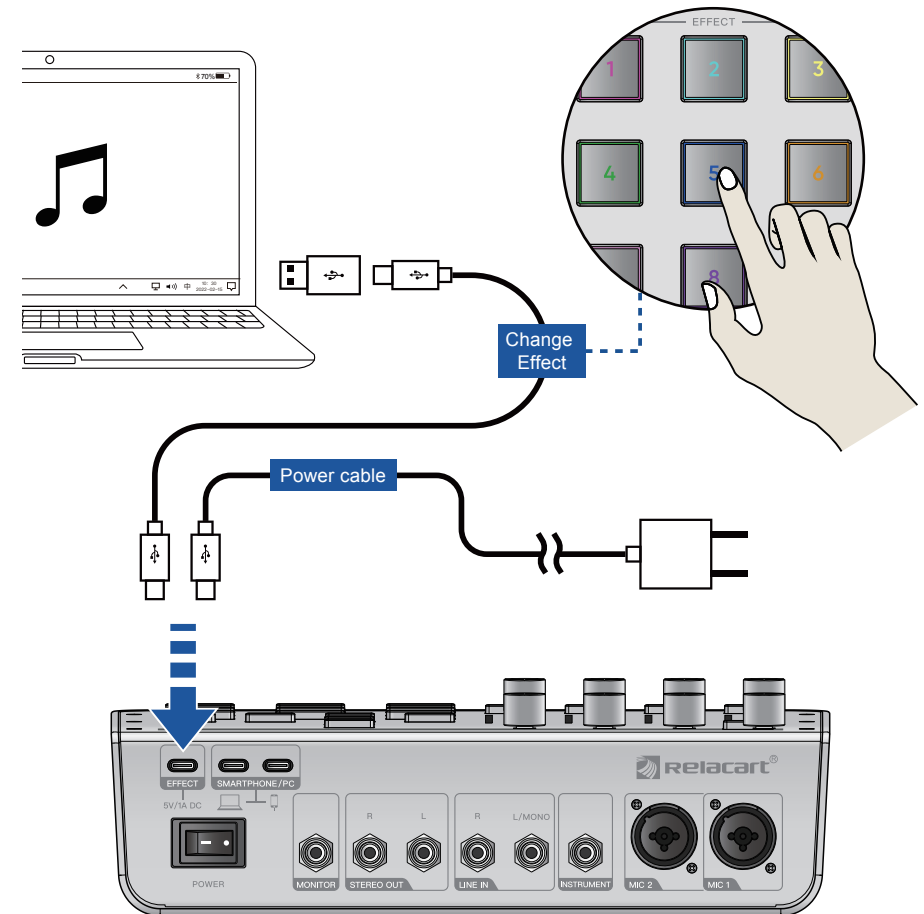




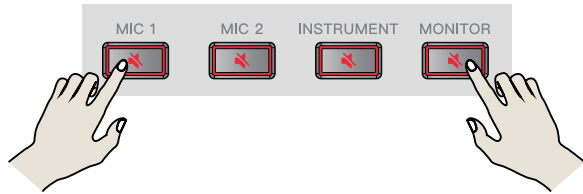
Connect your smartphone or computer through a data cable



Connecting your PC with a cable



Restore factory setting



* Restore factory setting: Press and hold the MIC1 and [MUTE] button on the MONITOR channels for 10 seconds to restore the factory default parameters.

Specification

Sample Rate:	24-bit, 48KHz
Frequency Respond:	20Hz to 20KHz
System Delay:	1.5 ms
T.H.D.:	< 0.05%
Input Crosstalk:	>65dB @ 1KHz (Adjacent Channels)
Signal to Noise Ratio:	90dB Single channel - fader max (A weighted)
Dynamic Range:	90dB Single channel - fader max (A weighted)
Common Mode Rejection Ratio:	>60dB @ 1KHz
MIC Input Impedance:	3KΩ (XLR Balance); 6.6KΩ (1/4")
MIC Gain:	0 to 45dB (XLR)
Power Supply:	DC 5V (1A)
Dimensions (mm):	260 (L) x 230 (H) x 89 (D)
Weight:	≈ 1.5Kg

PRECAUTIONS

Please read carefully before proceeding
Please keep this manual in a safe place for future refer - ence.

WARNING

Always follow the basic precautions listed below to avoid the possibility of serious injury or even death from electrical shock, short-circuiting, damages, fire or other hazards. These precautions include, but are not limited to, the following:

Power supply/Power cord

- Only use the voltage specified as correct for the device. The required voltage is printed on the power supply connector of the device.
- Use only the provided USB cable or a standard USB-A to USB-C 3.0 cable.
- Do not place the power cord near heat sources such as heaters or radiators, and do not excessively bend or otherwise damage the cord, place heavy objects on it, or place it in a position where anyone could walk on, trip over or roll anything over it.

Do not open

- Do not open the device or attempt to disassemble the internal parts or modify them in any way. This device contains no user - serviceable parts. If it should appear to be malfunctioning, discontinue use immediately.

Warning about humidity

- Do not expose the device to rain, use it near water or in damp or wet conditions, or place on it any containers (such as vases, bottles or glasses) containing liquids which might spill into any openings.
- Never insert or remove an electric plug with wet hands.

If you notice any abnormality

- If the power cord is frayed or damaged, there is a sudden loss of sound during use of the device or it emits unusual smells or smoke, please turn off the power switch immediately.
- If this device should be dropped or damaged, immediately turn the power off, disconnect the electric plug from the outlet.

CAUTION

Always follow the basic precautions listed below to avoid the possibility of physical injury to you or others, or damage to the device or other property. These pre - cautions include, but are not limited to, the following:

Power supply/Power cord

- Remove the electric plug from the outlet when the device is not to be used for extended periods of time, or during electrical storms.
- When removing the electric plug from the device or an outlet, always hold the plug itself and not the cord. Pulling by the cord can damage it.

Placement location

- Before moving the device, remove all connected cables.
- When setting up the device, make sure that the AC outlet you are using is easily accessible. If some trouble or malfunction occurs, immediately turn the power off and disconnect the plug from the outlet.
- Poor ventilation can lead to overheating and can damage equipment or even cause a fire.
- Do not expose the device to excessive dust or vibration, or extreme cold or heat (such as in direct sunlight, near a heater, or in a car during the day), in order to prevent the possibility of panel disfiguration or damage to the internal components.
- Do not place the device in an unstable position where it might accidentally fall over.

Connections

- Before connecting the device to other devices, turn off the power for all devices. Before turning the power on or off for all devices, set all volume levels to minimum.

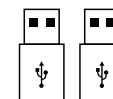
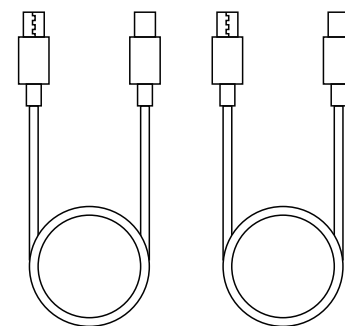
Handling caution

- Do not use the device in the vicinity of a TV, radio, mobile phone, or other electric devices. Otherwise, the device, TV, or radio may generate noise.
- When turning on the AC power in your audio system, always turn on the device FIRST, to avoid speaker damage. When turning the power off, the device should be turned off FIRST for the same reason.
- Do not insert fingers or hands into any gaps or openings (vents, etc.) of the device.

- Avoid inserting or dropping foreign objects (paper, plastic, metal, etc.) into any gaps or openings (vents, etc.) on the device. If this happens, turn off the power immediately and unplug the power cord from the DC/AC outlet.
- Do not use speakers or headphones for a long period of time at a high or uncomfortable volume level, since this can cause permanent hearing loss. If you experience any hearing loss or ringing in the ears, consult a physician.
- Do not rest your weight on the device or place heavy objects on it, and avoid use excessive force on the buttons, switches or connectors.
- When cleaning the device, use a dry and soft cloth. Do not use paint thinners, solvents, cleaning fluids, or chemical - impregnated wiping cloths.

包装清单

Podcast⁺ (播家) 声卡调音台
 USB-C 转 USB-A 转换头 *2
 双 USB-C 数据线 *2
 说明书
 合格证
 保修卡



引言

感谢您选用 RELACART 力卡播客制作录音室声卡，并欢迎您加入我们数以万计的专业用户队伍。我们的专业设计和生产经验确保了我们的产品质量，性能及稳定性等各方面的优良表现。

产品介绍

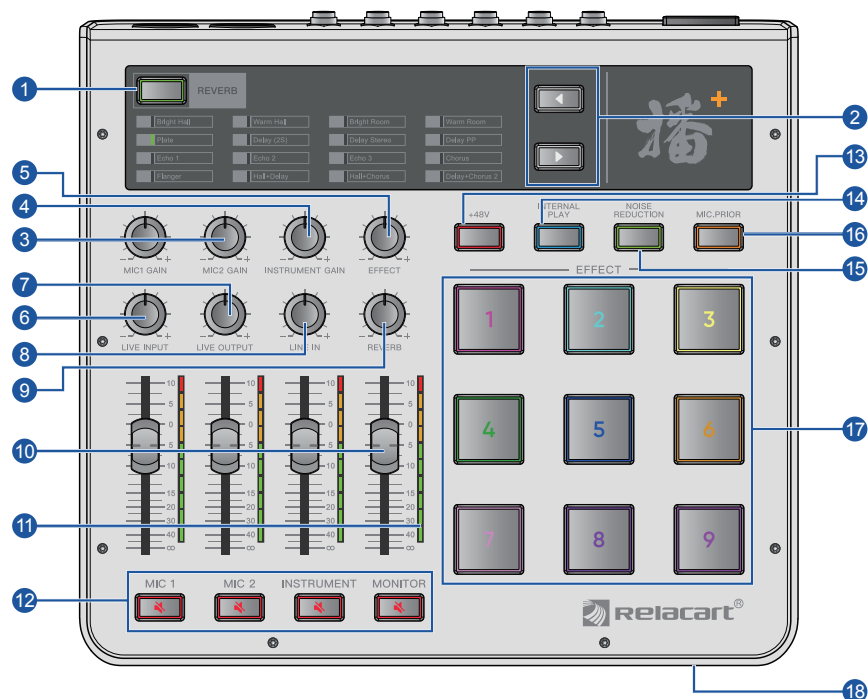
Podcast⁺ (播家) 是一款专门为直播平台设计的声卡调音台。集合了混音、音效、效果等直播的应用功能。可以同时连接 2 台手机或电脑通过数字音频传输到直播设备。播家设计轻便易携，面板布局简洁，功能区分清晰通俗易懂。本设备使用 USB-C 接口 5V/1A 供电，并支持合适的手机充电器或充电宝供电。播家适用于手机、平板、电脑等设备的直播、录音、K 歌等功能。

功能包括：

- 4 个滑动推子，分别调节话筒 1、话筒 2、乐器、监听音量，并配备 4 个静音按键。
- 8 个音量旋钮，分别调节话筒 1 增益、话筒 2 增益、直播输入、直播输出、乐器增益、伴奏音量、音效音量、混响音量。
- 9 个超大自定义音效按键，可通过 USB 更换音效。
- +48V 幻象电源开关，可为话筒端口提供电源，供直播电容话筒使用。
- 内放开关，开启后 2 个 USB-C 的输入音频不返回 USB-C 端口，消除回声问题。
- 降噪开关，开启后降低话筒拾取的环境噪声。
- 闪避开关，当话筒开启后有音频输入时，会将伴奏、乐器、音效的音频衰减。
- 混响，多达 16 种混响预设效果，适合多种场景应用。

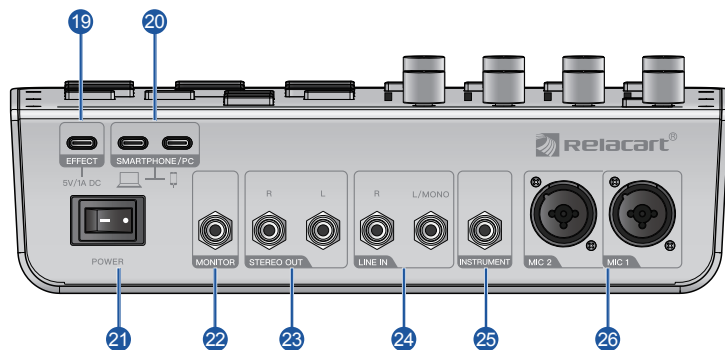
产品面板介绍

Podcast+ (播家) 前面板



- 1 REVERB 混响按键：内部预设16种模拟现场混响效果，可从16种内部预设效果中选择一种使用。按下 [REVERB] 按键，LED 指示灯亮起绿色表示打开混响功能；并搭配 [◀] / [▶] 按键，选择需要的效果。再按下 [REVERB]，LED 指示灯熄灭表示关闭混响功能。
- 2 ◀/▶ 控制按键：前进或后退切换模拟混响效果功能。
- 3 MIC1/2 GAIN 话筒增益旋钮：分别决定话筒 1 和话筒 2 的基本音量。调节这些旋钮，用于提升或衰减当前通道音量大小，最大增益为 45dB。

- 4 INSTRUMENT GAIN 乐器增益旋钮：调节从吉他或其他高阻抗输入的乐器声源的基本音量，最大增益为 45dB。
- 5 EFFECT 音效旋钮：调节自定义音效的音量。
- 6 LIVE INPUT 旋钮：调节从 USB 接口输入的音源音量。
- 7 LIVE OUTPUT 旋钮：调节从设备输出到 USB 接口的录音音量。
- 8 LINE IN 线路输入旋钮：调节从音频设备或连接至通道上的其他声源所输入声音的输出音量。
- 9 REVERB 混响旋钮：调节混响效果的音量。
- 10 推子：调节话筒 1、话筒 2、乐器或监听的音频输出电平。
- 11 MAIN 电平表：这些峰值电平表由 10 个 LED 组成，有三种颜色表示不同范围的信号电平，红绿灯样式。它们的范围从底部的 -40dB (绿色)，到中间的 0dB，再到顶部的 PEAK (红色)。
- 12 静音按钮：开启 (LED 亮红色) 或关闭 (LED 熄灭) 静音功能。当您想要休息一会儿或者在网络直播时遇到特殊情况时，可以使用该按钮来静音话筒 1、话筒 2、乐器或监听。
- 13 +48V 按钮：可以打开话筒 1 和话筒 2 的幻象供电 (红色亮起)，此按钮打开时，DC +48V 幻象供电会供应给 MIC 输入插口上的 XLR 插头。使用需要幻象供电的电容话筒时，请打开此开关按钮。
- 14 INTERNAL PLAY 内放按键：防止直播使用时出现回声现象。
- 15 NOISE REDUCTION 降噪按键：有效降低复杂的环境噪声。
- 16 MIC PRIOR 闪避按键：话筒音频输入时，伴奏、乐器、USB-C 和音效输入的音频会衰减；话筒音频无输入时，恢复至原来的音量。
- 17 EFFECT 自定义音效按键：9 种自定义音效按键，这些按钮可以播放自定义设置的音频文件，可以通过 EFFECT 的 USB-C 接口连接电脑，以 U 盘的形式更换自定义的音效。
注意：将已制作好的音效文件替换成出厂的音效文件 (文件的名称需修改为：00001 — 00009)，否则识别不了音效文件；音效文件总内存 32M，支持 MP3、WAV 音频格式。
- 18 主耳机 [] 输出插口：用于连接您的耳机插头。

Podcast⁺（播家）后面板

- 19 EFFECT/5V DC 端口：用于更换您自定义专属直播音效和市场有售的 USB 电源适配器或 USB 移动电源。

须知

- 使用本产品前，请务必阅读您所使用的 USB 电源适配器或 USB 移动电源的安全注意事项。
- 请使用输出电压为 4.8 V–5.2 V 以及输出电流至少为 1A 或更高的 USB 移动电源或 USB 电源适配器。

- 20 USB 2.0 端口：在此处连接您的计算机或智能手机/平板电脑。

须知

- 务必使用本产品随附的 USB 线缆。
- 请勿将除智能手机、平板电脑或计算机以外的其他任何设备连接至 USB 2.0 接口。
- 插拔 USB 线缆前，请退出所有应用程序，确保本产品当前没有传输任何数据。
- 拔掉线缆后，在重新插入线缆之前，请至少等待 6 秒钟。快速插拔线缆可能会造成设备故障。

- 21 电源拨动开关：用于打开（I）或关闭（O）设备电源。

- 22 MONITOR 输出插口：用于连接耳机，此插口支持立体声 phone 型插头。

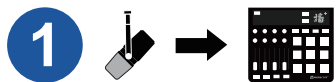
- 23 STEREO 输出插口：支持 phone 型插头，用于连接有源音箱或录音机，以立体声输出混合的声音。

- 24 LINE IN 输入插口：支持 phone 型插头，用于连接线路信号设备，如音频设备等。用通道上的“L/MONO”插口连接单声道输出的乐器等。在这种情况下，输入到“L/MONO”插口的声音会从调音台的左右两个通道同时输出。

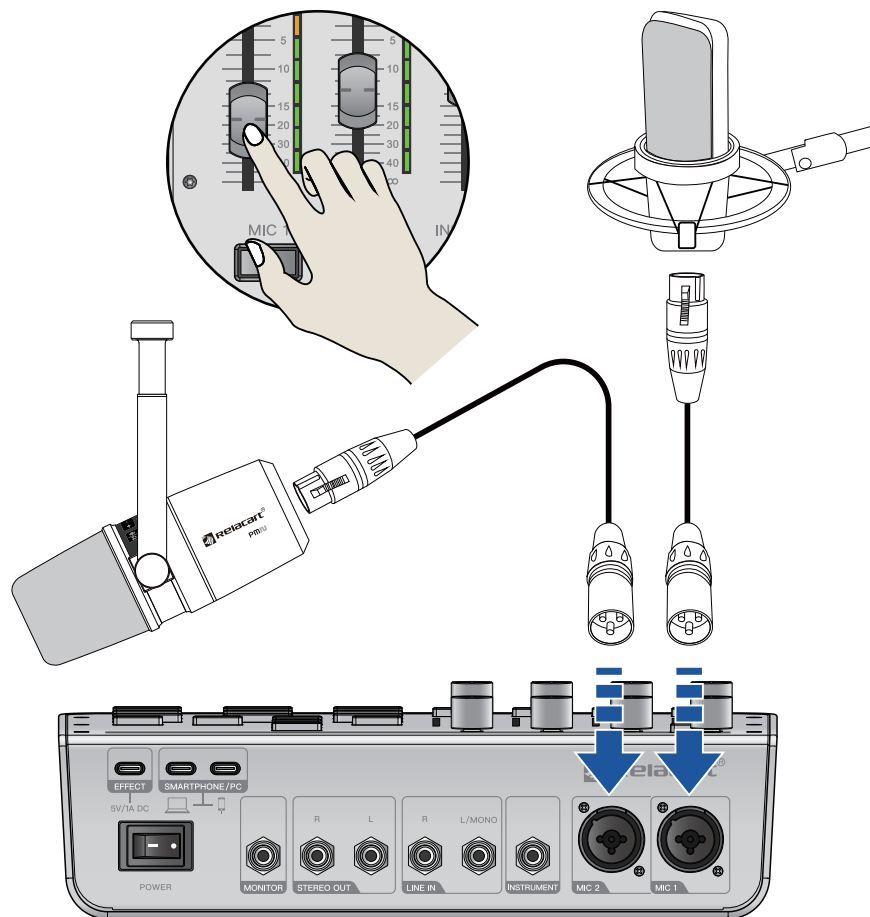
- 25 INSTRUMENT 输入插口：支持 phone 型插头，用于连接吉他或其他高阻抗输入的乐器。

- 26 MIC XLR/LINE 插口：在此处连接麦克风、电子乐器或其他设备。这是一个 XLR 母连接器（支持幻象供电），可接受任何类型源的平衡麦克风或线路电平输入。这些专业的动圈和电容麦克风前置放大器具有更高的保真度和净空，可与当今市场上任何独立的麦克风前置放大器相媲美。这些电路在排除嗡嗡声和噪音方面很出色。

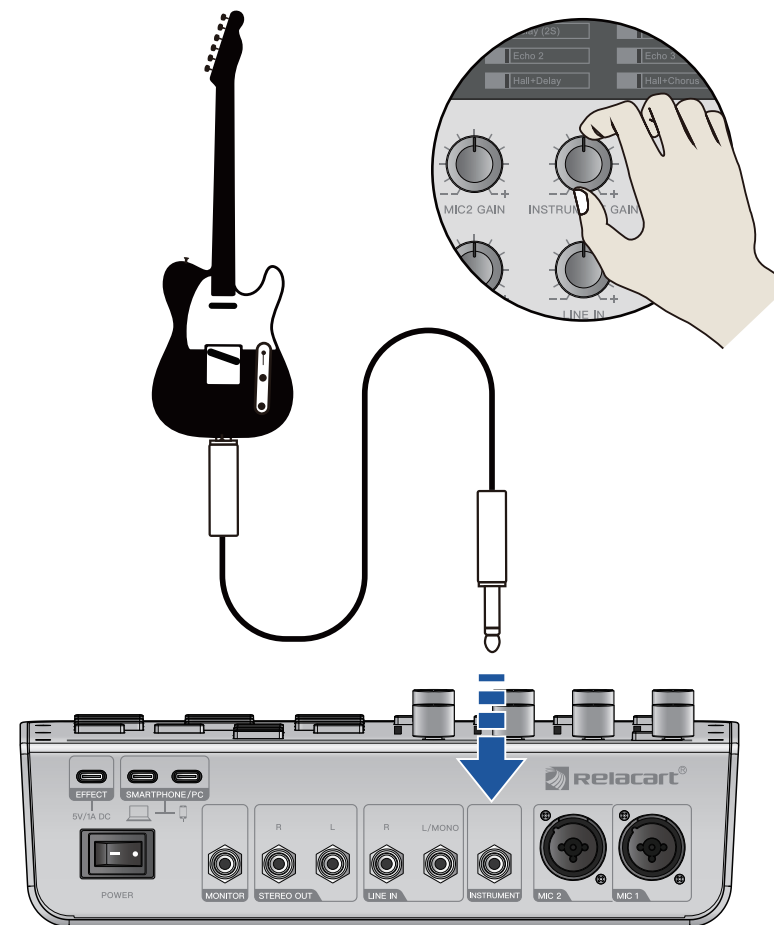
快速入门指南

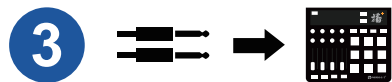


连接您的麦克风

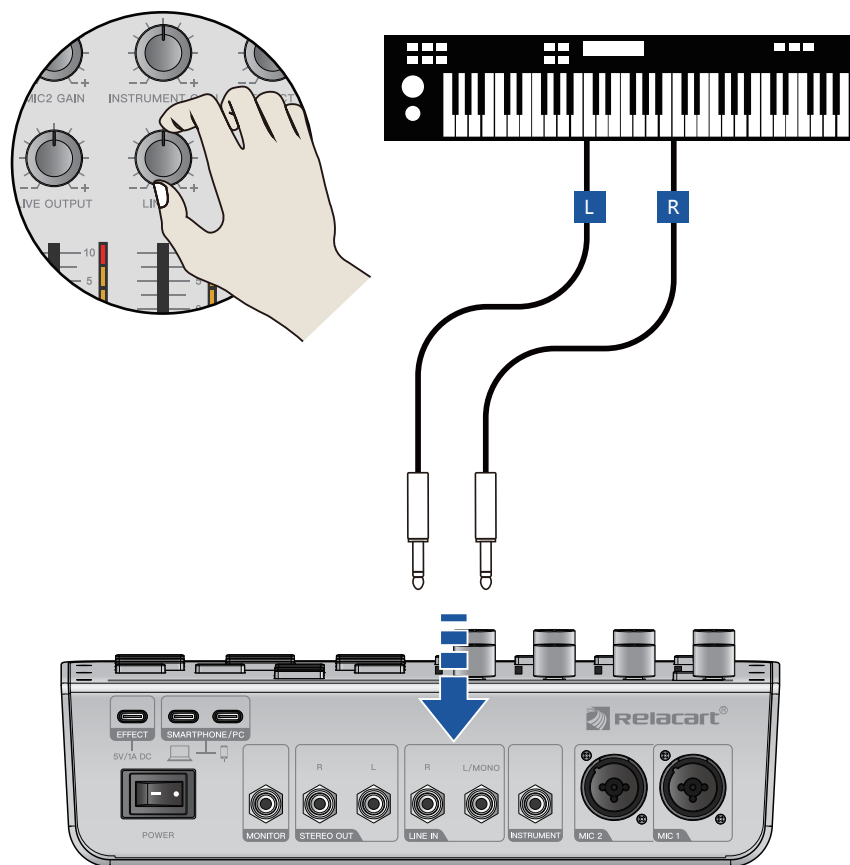


连接您的乐器

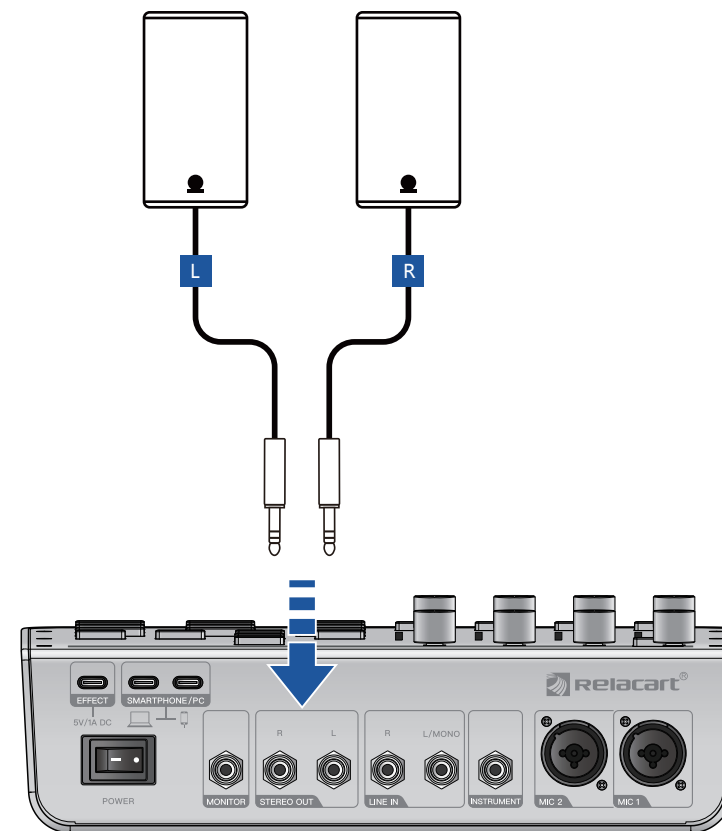




连接您的线路输入设备

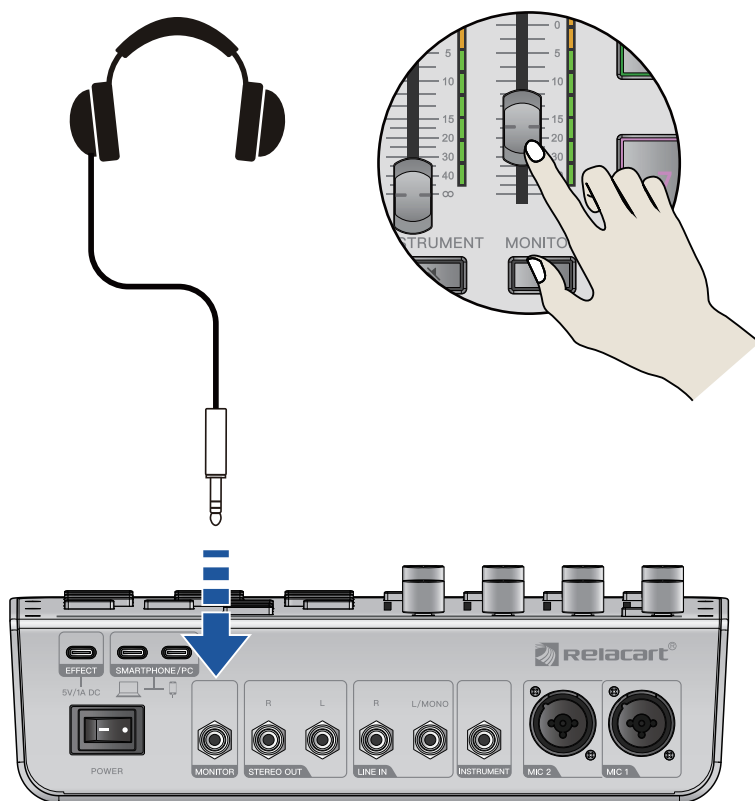


连接您的有源音箱

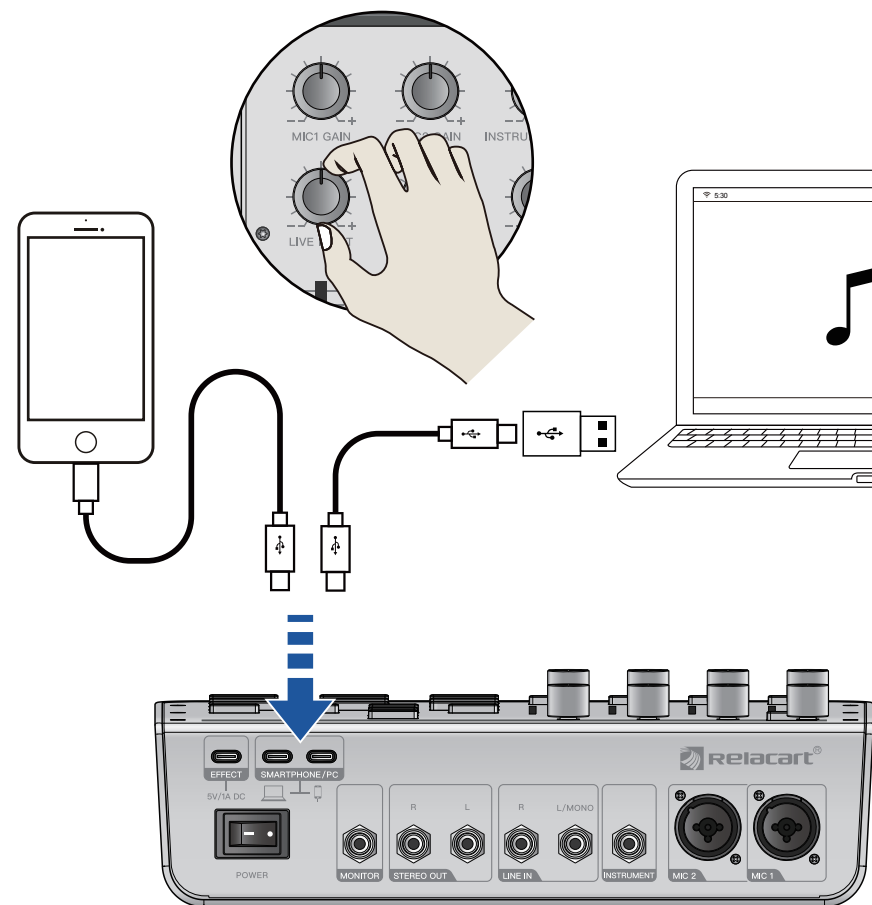




连接您的监听设备

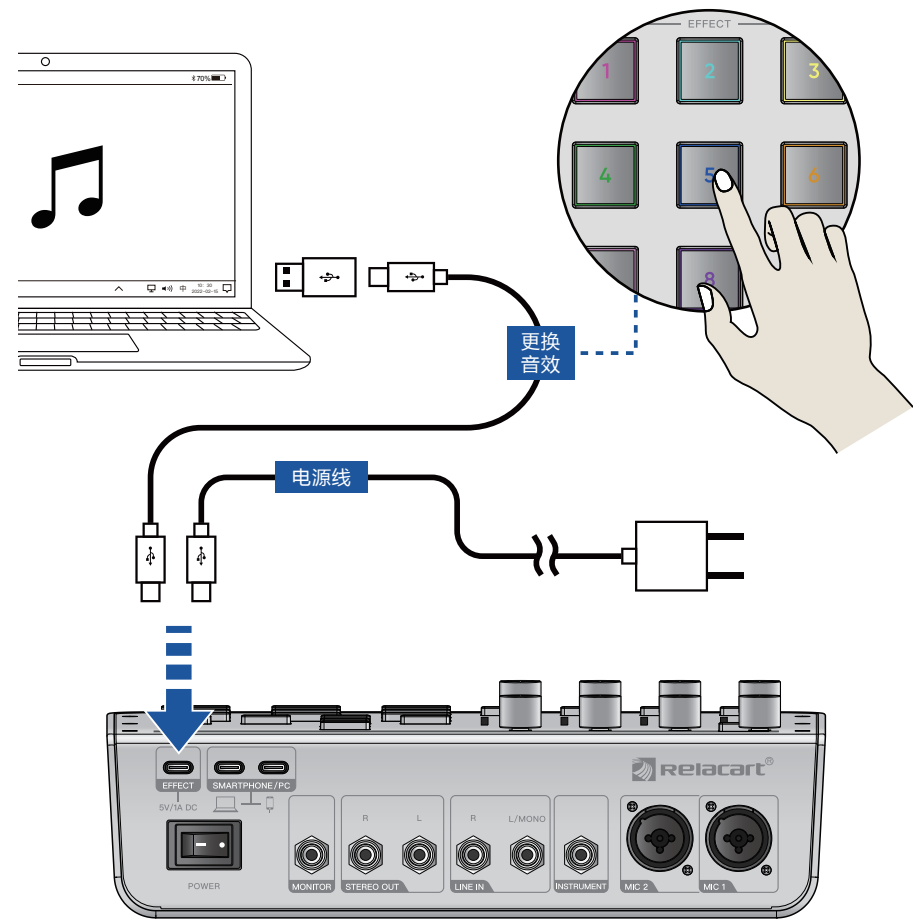


通过数据线连接您的智能手机或电脑

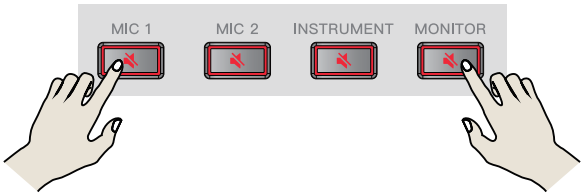




通过数据线连接您的电脑



恢复出厂设置



* 恢复出厂设置：同时长按 MIC1 和 MONITOR 通道上的 MUTE 静音按键 10 秒，即可恢复出厂预设参数。

技术指标

采样率	24 - bit, 48 KHz
频率响应	20 Hz 至 20 KHz
系统延时	1.5 ms
总谐波失真	<0.05%
输入串扰	> 65dB @ 1KHz (相邻通道)
信噪比	90 dB 单通道-推子最大 (A加权)
动态范围	90 dB 单通道-推子最大 (A加权)
共模抑制比	>60dB @ 1KHz
MIC 输入阻抗	3 K Ω (XLR 平衡) ; 6.6 K Ω (1/4")
MIC 增 益	0 至 45 dB (XLR)
电 源	DC 5V (1A)
尺 寸 (mm)	260 (L) x 230 (H) x 89 (D)
重 量	\approx 1.5Kg

注意事项

请在操作使用前，首先仔细阅读下述内容
请将本说明书存放在安全的地方，以便将来随时参阅。

警告

为了避免因触电、短路、损伤、火灾或其它危险可能导致的严重受伤甚至死亡，请务必遵守下列基本注意事项。这些注意事项包括但不限于下列情况：

电源/电源线

- 只能使用本设备所规定的额定电压。所要求的电压被印在本设备的供电接口上。
- 只能使用提供的 USB 线或标准的 USB-A 转 USB-C 3.0 线。
- 请勿将电源线放置在热源如加热器或散热器附近，不要过分弯折或损伤电源线，不要在其上加压重物，不要将其放置在可能被踩踏引起绊倒或可能被碾压的地方。

请勿打开

- 请勿打开本设备或试图拆卸其内部零件或进行任何方式的改造。本设备不含任何用户可自行修理的零件，若出现异常，请立即停止使用。

关于潮湿的警告

- 请勿让本设备淋雨或在水附近及潮湿环境中使用，或将盛有液体的容器放在其上（如花瓶、瓶子或玻璃杯），否则可能会导致液体溅入任何开口。
- 切勿用湿手插拔电源线插头。

意识到任何异常情况时

- 若电源线出现磨损或损坏，使用设备过程中声音突然中断或因此而发生异常气味或冒烟，请立即关闭电源开关。
- 若本设备发生摔落或损坏，请立即关闭电源开关，从电源插座中拔出电源线插头。

小心

为了避免您或周围他人可能发生的人身伤害、设备或财产损失，请务必遵守下列基本注意事项。这些注意事项包括但不限于下列情况：

电源/电源线

- 当准备长期不使用本设备或发生雷电时，请从电源插座中拔出电源线插头。
- 当从本设备或电源插座中拔出电源线插头时，请务必抓住插头而不是电源线。直接拽拉电源线可能会导致损坏。

放置位置

- 移动设备之前，请务必拔出所有已连接的连接电缆。
- 设置设备时，请确认要使用的交流电源插座伸手可及。如果发生问题或故障，请立即断开电源开关并从电源插座中拔下插头。
- 通风不畅可能导致过热，并可能损坏设备，甚至引起火灾。
- 为了避免操作面板发生变形或损坏内部组件，请勿将本设备放在有大量灰尘、震动、极端寒冷或炎热（如阳光直射、靠近加热器或烈日下的汽车内）的环境中。
- 请勿将本设备放在不稳定的地方，否则可能会导致突然翻倒。

连接

- 将本设备连接到其它设备之前，请关闭所有设备的电源开关。在打开或关闭所有设备的电源开关之前，请将所有音量都调到最小。

小心操作

- 请勿在电视、收音机、手机或其他电子设备附近使用本设备。这可能会在设备本身以及靠近设备的电视机或收音机中引起噪音。
- 打开音频系统的交流电源时，请始终最先打开本设备，以避免损坏音箱。同样，关闭电源时，请始终最后关闭本设备。
- 请勿将手指或手插入本设备的任何间隙或开口（通风口等）。
- 请避免在设备上的任何间隙或开口（通风口等）插入或落进异物（纸张、塑料、金属等）。如果发生这种情况，请立即关闭电源开关，然后从 DC/AC 电源插座中拔出电源插头。
- 请勿长时间持续在很高或不舒服的音量水平使用本设备或耳机，否则可能会造成永久性听力损害。如果遇到失聪或耳鸣的情况，请寻求医治。
- 请勿将身体压在本设备上或在其上放置重物，操作按钮、开关或插口时要避免过分用力。
- 清洁设备时，使用柔软的干布。请勿使用涂料稀释剂、溶剂、清洁液或浸了化学物质的抹布。